

Design & Lifestyle

20  
24

# porfolio.

Embrace Creativity  
Furniture / Interior Design/ Inspiration



---

By Albena Zaneva

# Table of CONTENTS

— 04 - 05

## ABOUT ME

Brief bio about my professional path in Real Estate and Interior Design.

— 06 - 11

## RESIDENTIAL PROJECTS

Examples of my work in Residential Remodels for the past 6 years.

— 12 - 17

## STUDY PROJECTS

UCLA Interior Architecture Certificate program projects.

— 18

## CONTACT

Address/E-mail  
albena@azdesignatelier.com

# EDITOR'S Talk

## the nature of love

refers to  
'being enveloped  
with a sense of unity  
and security'.



Art as form of beauty, divine order, connection & love.



Albena Zaneva  
AZ Design Atelier

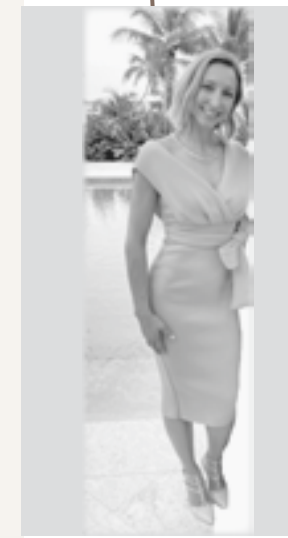


With a foundation rooted in the prestigious halls of Sotheby's in Spain, I have cultivated a unique perspective on design and luxury living. My experience in residential real estate in the US has honed my skills in understanding the balance between functionality and aesthetics.

I believe that the spaces we inhabit should not only reflect our personalities but also enhance our daily experiences. Every design decision is an opportunity to create harmony between form and function, crafting environments that inspire and uplift.

UCLA Interior Architecture: My studies at UCLA have equipped me with a deep understanding of architectural principles, enriching my design approach with a strong foundation in spatial design and innovation.

## About me



The best way to  
predict the future  
is to design it.

# RESIDENTIAL PROJECTS



Transformative ordinary houses into elegant and efficient dream homes.

Albena Zaneva &  
AZ Design Atelier

Interior Design

How to decorate your

## Feel the Ocean Breeze Juno Beach

Very first residential project was completed in 2017. It included a complete renovation of an ideally located corner unit with stunning ocean views just a few steps from the beach.



How to decorate your home

## Initial Design Project

Some of the key elements were opening up the kitchen/dining/living space, complete kitchen and bathroom remodel, and a long list of additional walls and landscape enhancements. The property was sold for a record price in the neighborhood.





## Listen to the Trees

Mountain Retreat's Peace  
and Happiness Philosophy at Home

# Beaver Creek

Ski-in/ski-out Penthouse  
Arrowhead Lift Station



This unique penthouse was not at the level of its unbeatable ski-in-ski-out location in Arrowhead, Beaver Creek. The renovation included a full kitchen and master bathroom remodel a new hardwood floor throughout the entire space, a new fireplace, and lighting throughout the property among others. The property was sold in hours doubling its initial purchase investments in profit.



**Palm Beach Gardens**  
**THE SANCTUARY**

This house remodel presented a big challenge that resulted in a dramatic transformation and successful sale.

---

**Enjoy Serenity**

**01**

Create two new bathrooms & brand new guest bedroom.



**02**

Transform the main living area to an open space easy to entertain.



**03**

Modernize the master bedroom & remodel the master bath, artisan plaster wall artwork.



---

**DESIGN PICKS**

Designed by  
AZ Design Atelier



1 & 2 pt perspective  
drawing sketches

# UCLA

INTERIOR ARCHITECTURE  
Projects

initiation in one and two point drawings. The project consist in realistic representation of a minimalistic bedroom design from a magazine on our choice.

One point perspective  
drawing for the course of  
Design Communication I,  
UCLA Interior Architecture,  
Certificate Program



# Rococo Contemporary MOOD BOARD

History of Environmental Arts II  
UCLA  
Interior Architecture Certificate Program  
Rococo in Contemporary Setting Furniture Final Assignment



# SKETCHUP & V-Ray Rendering of a Space




Rococo and Neoclassicism Elements in Contemporary Setting  
Edition of wall and furniture elements  
Lighting





# Photoshop & Illustrator

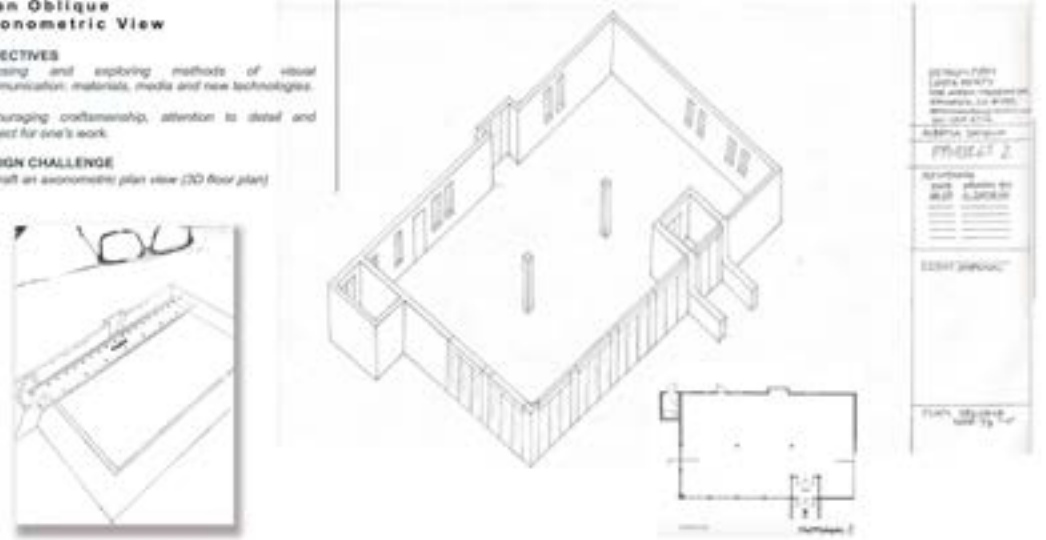
## Commercial & Residential Sketches Sketchup

commercial project. 


**Plan Oblique Axonometric View**

**OBJECTIVES**  
 Exploring and exploring methods of visual communication; materials, media and new technologies.  
 Encouraging craftsmanship, attention to detail and respect for one's work.

**DESIGN CHALLENGE**  
 To draft an axonometric plan view (2D floor plan)



ELEMENTS BY DESIGN 1


residential project. 

**Main Level Renovation**

**INDEX**

**MAIN LEVEL RENOVATIONS**

1. New open kitchen concept with kitchen island
2. New living area
3. New living area with wall-mounted TV and sideboard
4. Vintage music sideboard
5. New glass sliding terrace doors
6. New master bathroom area
7. King bed
8. New glass sliding doors enclosed wardrobe
9. Additional storage
10. New panoramic window in the master bedroom
11. New wooden floors in the master bedroom
12. Polished concrete floors on the rest of the main level
13. Glass railing staircase
14. Enlarged terrace with glass railings



ELEMENTS BY DESIGN 1

residential project. 

**Accent Pieces Proposition Living & Dining Area**

Relax and Enjoy the common open space.

Natural materials and the strong presence of the wood pieces in the living and dining areas in addition to the minimalist design of the kitchen. Low-profile furniture. Simple minimalist look.

Soft textures and warm colors infuse the space with a calm state of mind. Jute and wool rug over polished concrete floors. A lot of contrast and color with the pillows and green pots. Simplicity and comfort. The oval shapes of the walls, the sideboard, and the round table give a bit of a retro style with a contemporary look and quality of fit furniture pieces.



	RH \$8,900		RH \$3,500
	RH \$2,390		RH \$1,600
	RH \$3,590		RH \$600

ELEMENTS BY DESIGN 1



**Cultivate the power  
of peace & inspiration.**

Design & Lifestyle

**Contact  
Me**

Address:

725 N Hwy A1A, 103  
Jupiter, FL 33477

P: 561-268-6716

E: [albena@azdesignatelier.com](mailto:albena@azdesignatelier.com)

W: [www.azdesignatelier.com](http://www.azdesignatelier.com)

